

What Do I Need?

This document is for people that have an RSS-10 and want to start using an iPad instead of a Windows/Mac computer or MCR-8 type of controller.

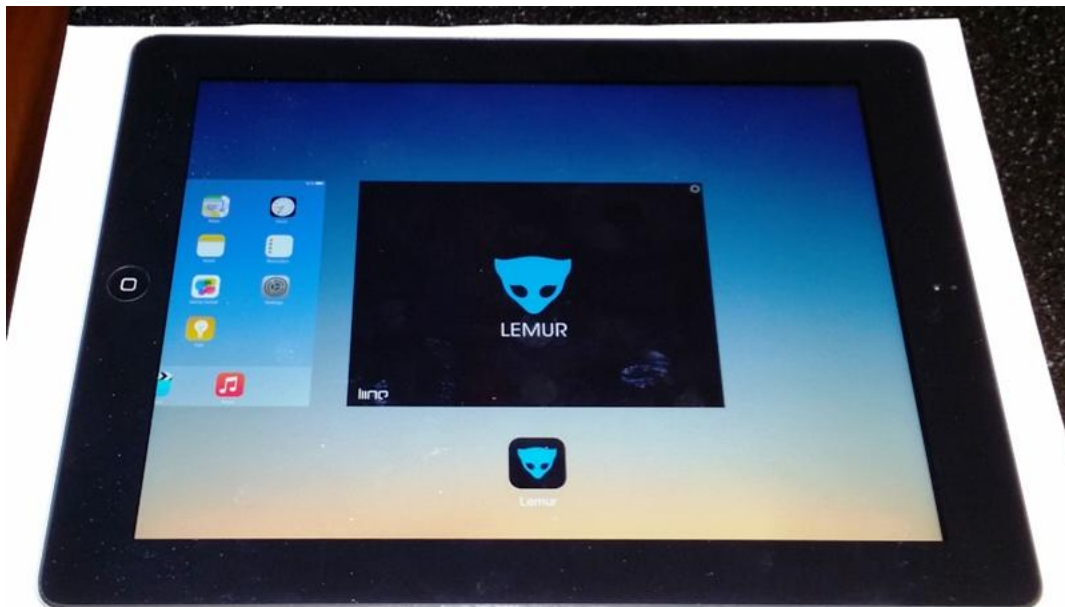
Here is the summary:

- iPad
- Lemur software
- Camera Connector Kit
- USB -> MIDI cable
- RSS-10
- My RSS-10 Lemur template

More details:

Any iPad generation supported by Lemur can be used. Liine is the company that developed Lemur for the iPad and Android: <https://liine.net>

The Lemur software can be downloaded from the iTunes store. Version 5 or higher is required since the templates make use of features introduced in Version 5.



To allow the iPad to talk to the RSS-10, some type of MIDI connection is required. Depending on which iPad model is used, one of the standard Apple Camera Connector Kits is required. I have had mixed success using 3rd party adapters, especially with the Lightning connection, but if you already have something, go ahead and try it first.



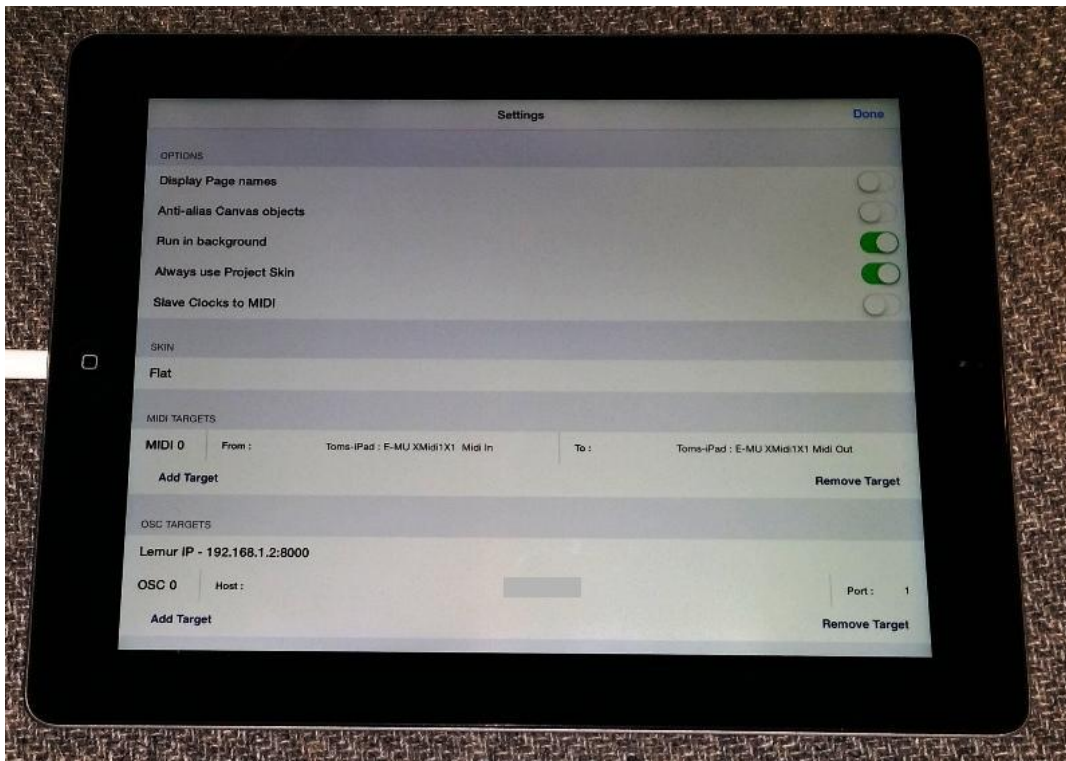
Next, a USB to MIDI cable is required. You can connect it directly to the RSS-10 or to a MIDI patchbay. Again, I have had mixed success with different cables. For the iPad and Lemur combination, I know the EMU XMIDI 1X1 USB MIDI interface works. I have had problems connecting an M-AUDIO UNO 1X1 MIDI interface. The M-AUDIO works fine when connecting a computer USB port to MIDI devices, but with the iPad/CCK/Lemur combination I do not get a successful connection.



Once the CCK and USB MIDI cable are connected, you need to configure the Lemur settings to recognize it. First, start up Lemur and touch the Settings gear in the upper right corner:

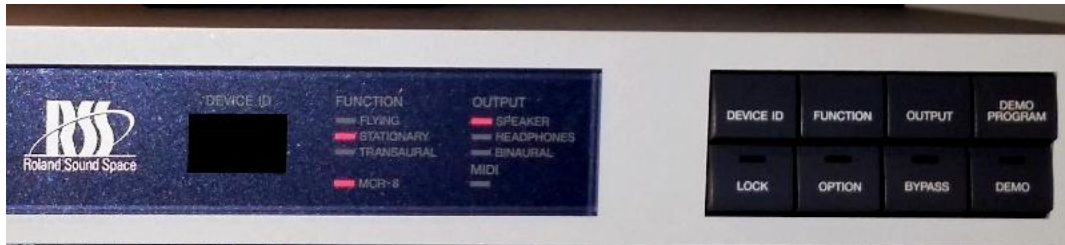


Then, touch the “More settings...” option.



In the section labeled MIDI Targets, touch the area to the right of the word "From:" to bring up a list. Your USB MIDI cable should be there and if so, touch it to select. Do the same for the "To:" section. Note the MIDI Target number to the very left of the display. You will need that when configuring the RSS-10 template. In the above picture, it is MIDI 0. You can have multiple targets defined (up to 8) if you have different types of connections and different applications running on them, but the RSS-10 template just needs to know which connection to use.

Of course you also need an RSS-10. There are only a couple of things to note for it. First, MIDI reception must be enabled. That means turning on MCR-8 mode. This is done by pressing Option (LED in the button turns on), Function (MCR-8 LED turns on), then Option (LED in the button turns off). Also, note the RSS-10 Device ID. The RSS-10 Lemur template currently supports IDs 1-16, so if you have it set to an ID higher than 16, use the Device ID button to cycle through until you are back in the 1 to 16 range. If everything is successful, you will see the MIDI LED flickering on and off as you move the controls. If you don't see anything, then double check all the settings and connections discussed above.



At this point, everything should be connected and talking, so consult the README document to finish setting up and using the RSS-10 Lemur template.